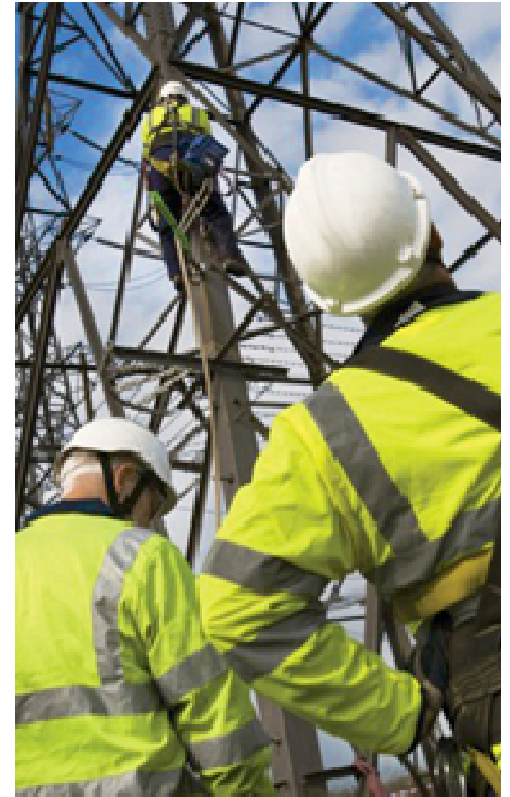


Exit Capacity Substitution and Revision

Workshop 3: Action 16



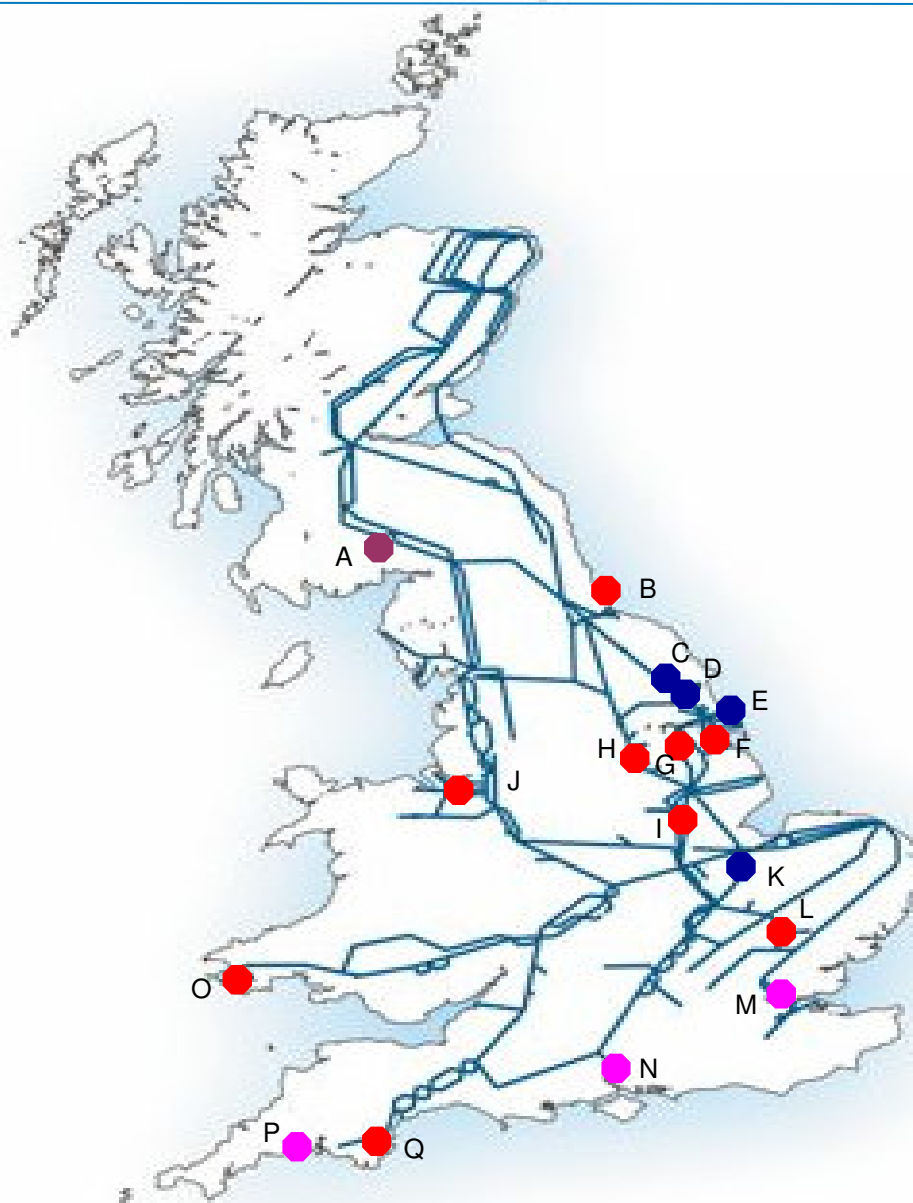
nationalgrid

The power of action.™

Action: “Spare” Capacity.

Workshop 3 Action 16: National Grid to record the actual incremental quantities against the location. This information to be published.

Incremental Capacity released in July 2009



- Inter-connector - no revenue driver
- Storage – no revenue driver
- Power station – no revenue driver
- Power station with revenue driver

Actions

Map location	Exit Point	Incremental capacity kWh/day	Revenue Driver
A	Moffat	95,078,028	No
B	Teesside Hydrogen	28,400	No
C	Hornsea	22,359,585	No
D	Garton (Aldbrough)	114,500,000	No
E	Rough	210,479,121	No
F	Stallingborough	1,512,169	No
G	Thornton Curtis (Killingholme + Humber Refinery)	29,890,000	No
H	Blyborough (Cottam)	1,760,000	No
I	Staythorpe	5,760,000	No
J	Weston Point (Rocksavage)	2,650,000	No
K	Caythorpe	75,000,000	No
L	Epping Green (Enfield Energy)	1,190,000	No
M	Stanford-le-Hope (Coryton)	1,990,000	Yes
N	Marchwood	39,840,000	Yes
O	Upper Neeston (Milford Haven)	7,180,000	No
P	Langage	40,004,000	Yes
Q	Centrax Industrial	85,000	No