

Operational Forum Meeting



26th April 2018, 9:30AM

Radisson Grafton Hotel, 130 Tottenham Court Road, London.

System Management Principles Statement



- **Summary of balancing actions and breaches for February 2018 and March 2018**
- **Performance compared to last year**

Summary Report

1st February 2018 to 31st March 2018

	Feb-2018	Mar-2018
Total Number of Buy Actions	16	14
Total Number of Sell Actions	12	36
Total	28	50

	Feb-2017	Feb-2018	Mar-2017	Mar-2018
Total Number of Balancing Actions (Calendar YTD)	9	28	15	50

Operational Overview

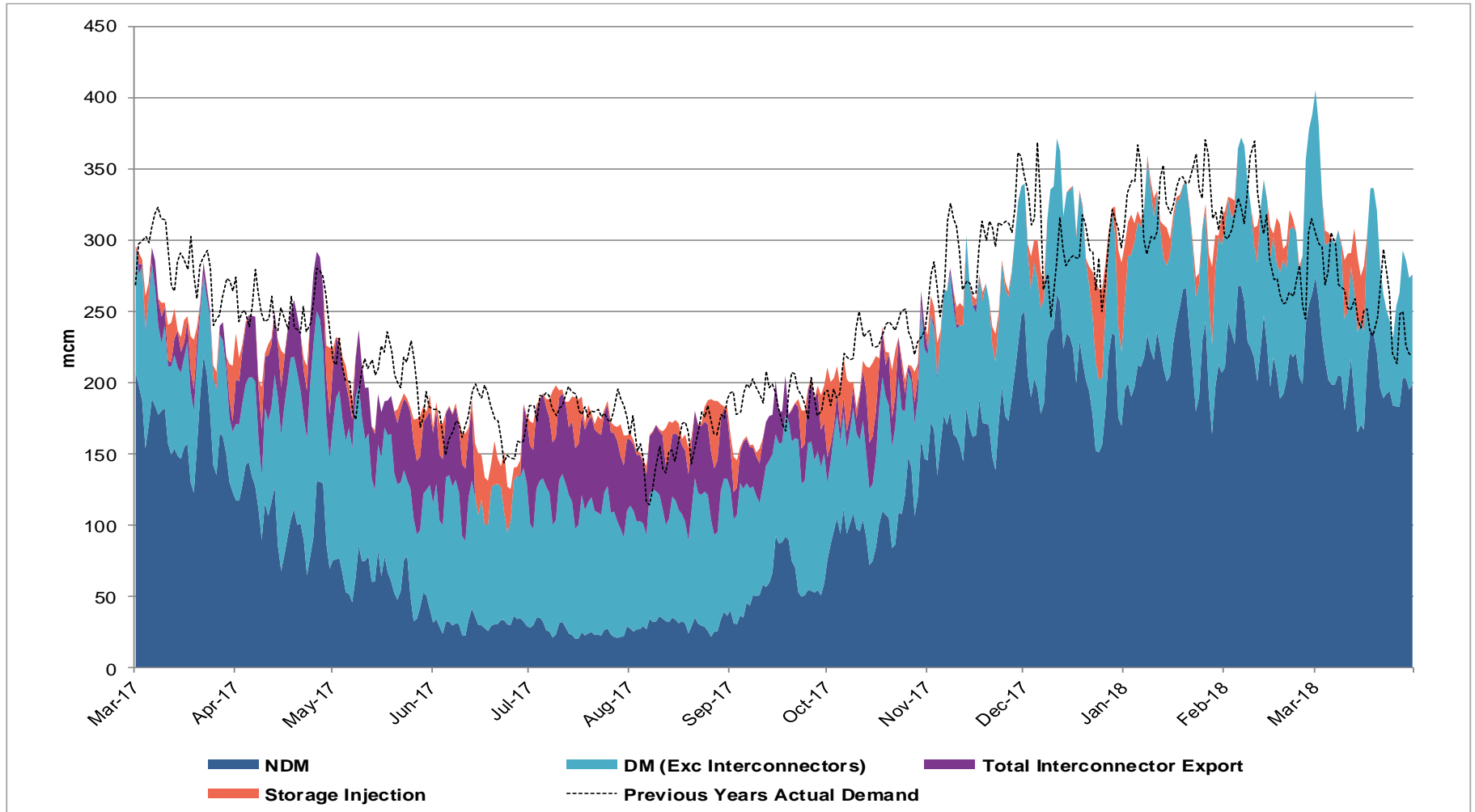


Demands



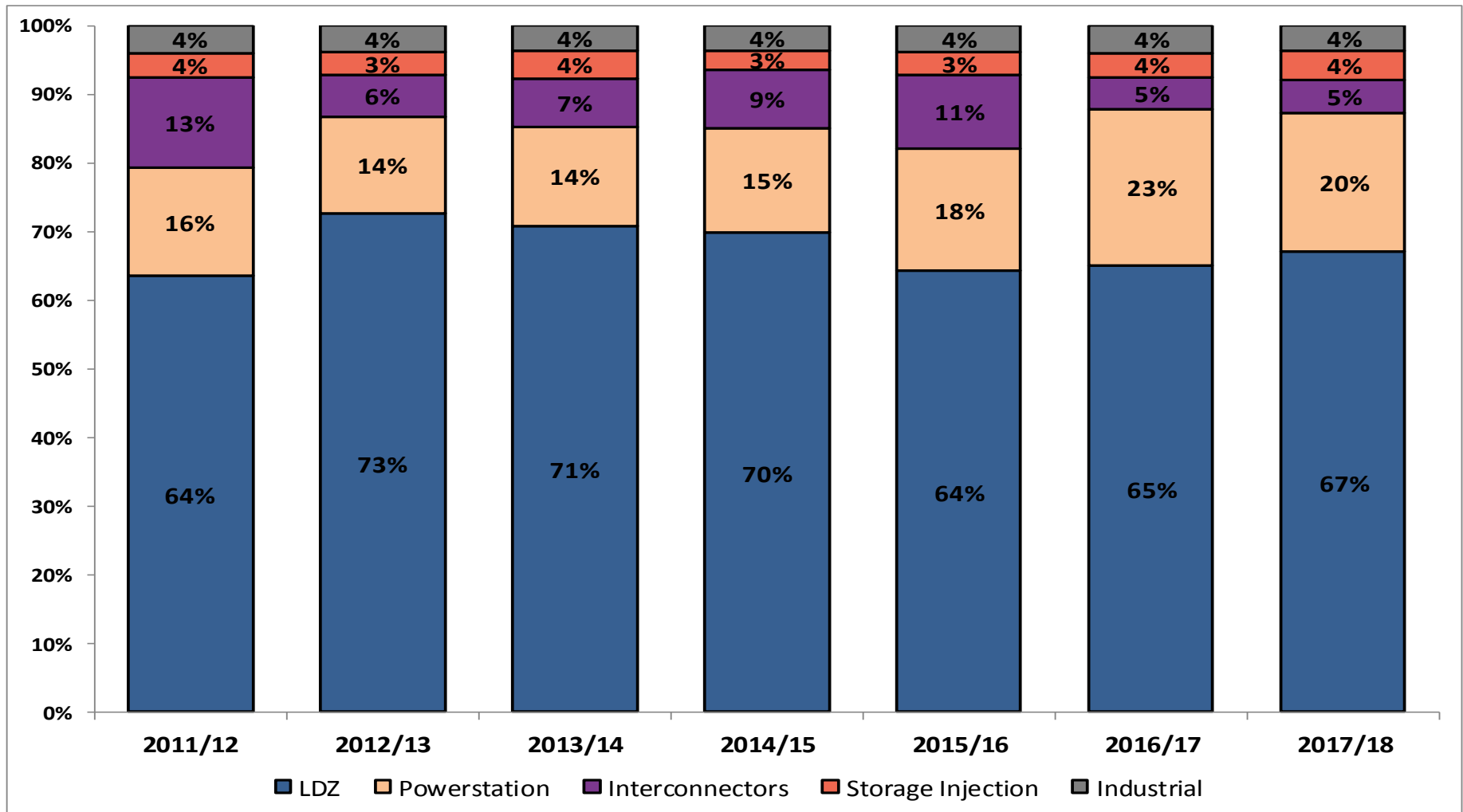
Gas Demand Breakdown

1st March 2017 to 31st March 2018 vs Previous Year



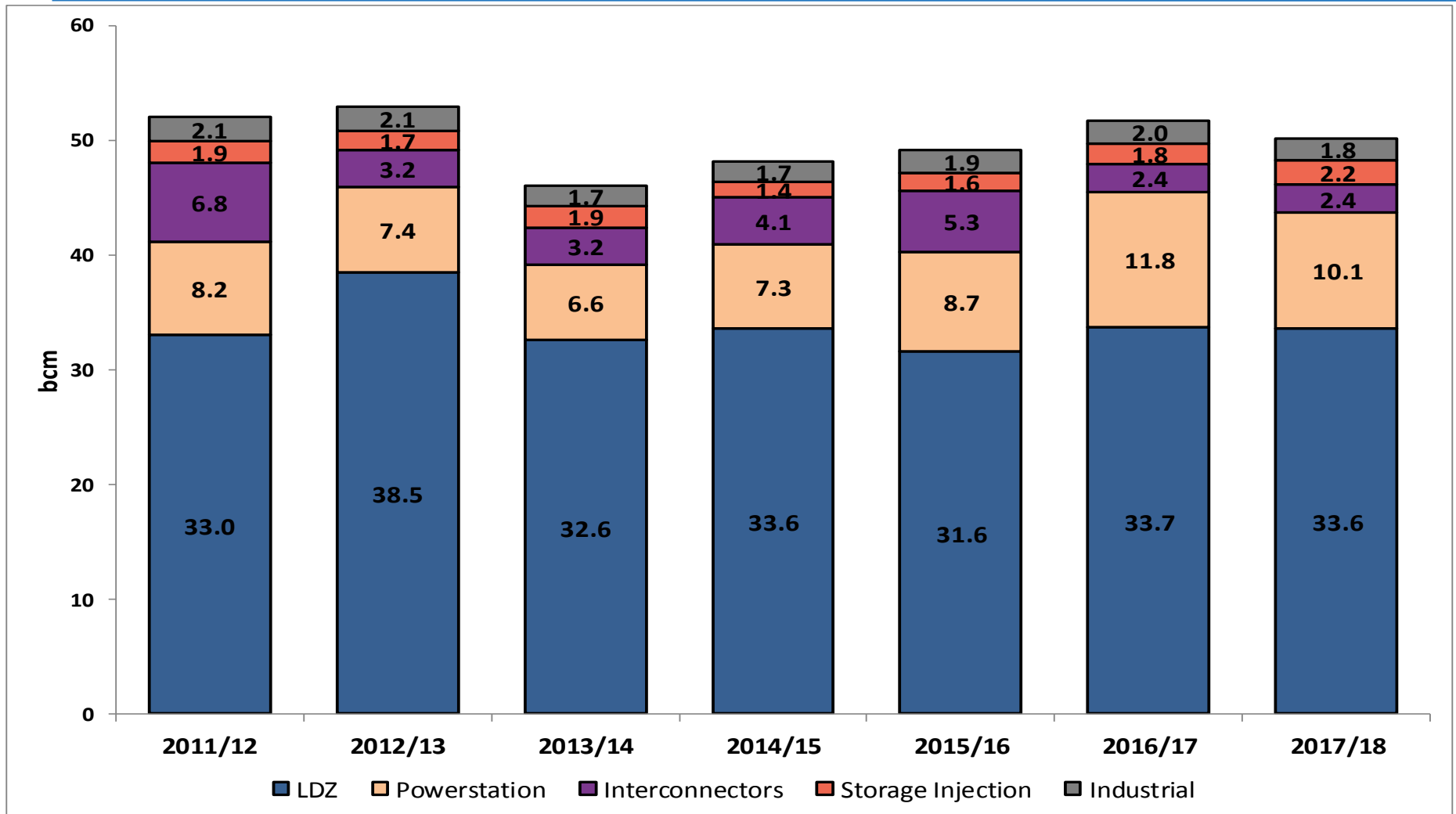
Gas Demand Breakdown

1st October 2017 to 31st March 2018 vs Same Period in Previous Years



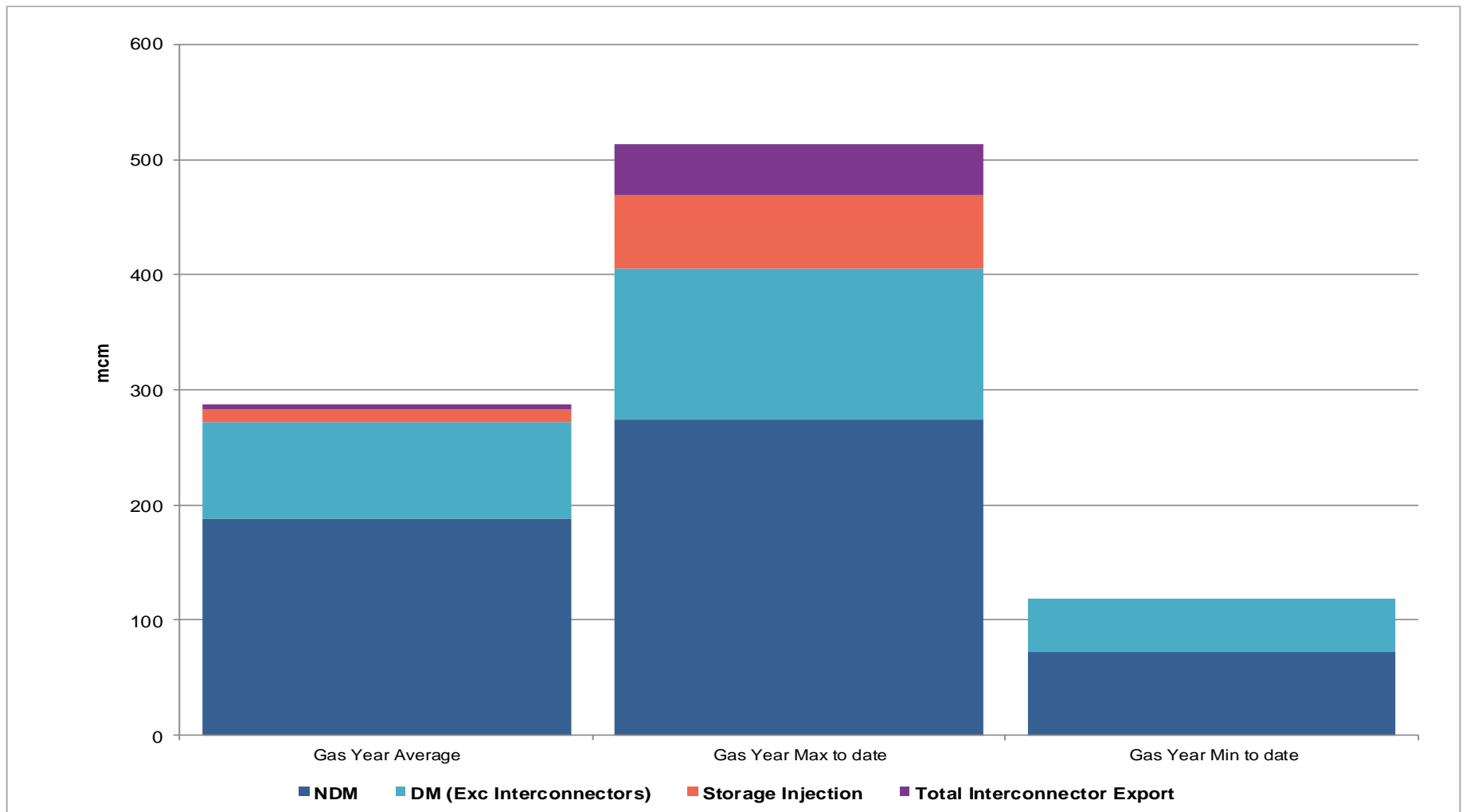
Gas Demand Breakdown (bcm)

1st October 2017 to 31st March 2018 vs Same Period in Previous Years



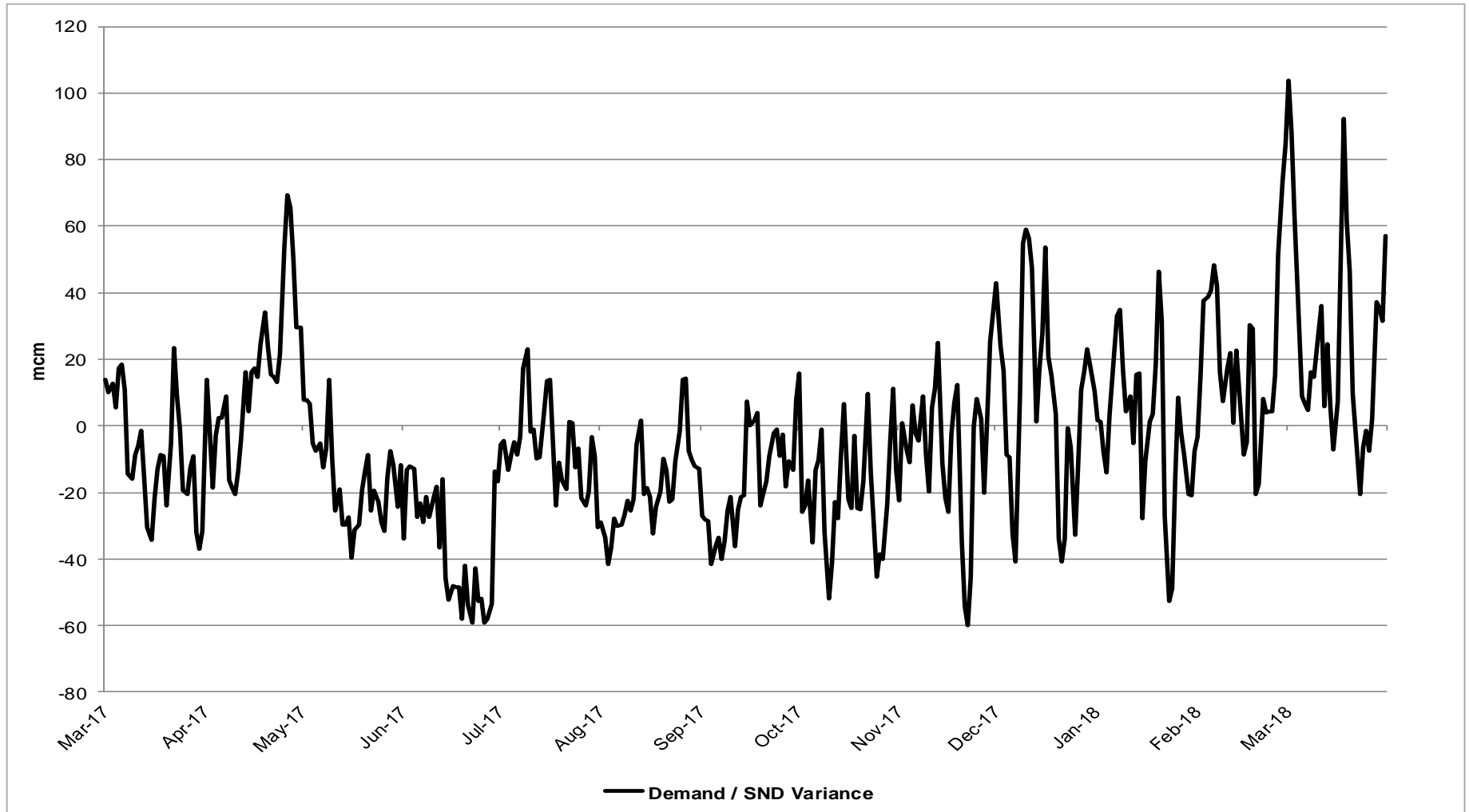
Gas Demand Statistics

1st October 2017 to 31st March 2018



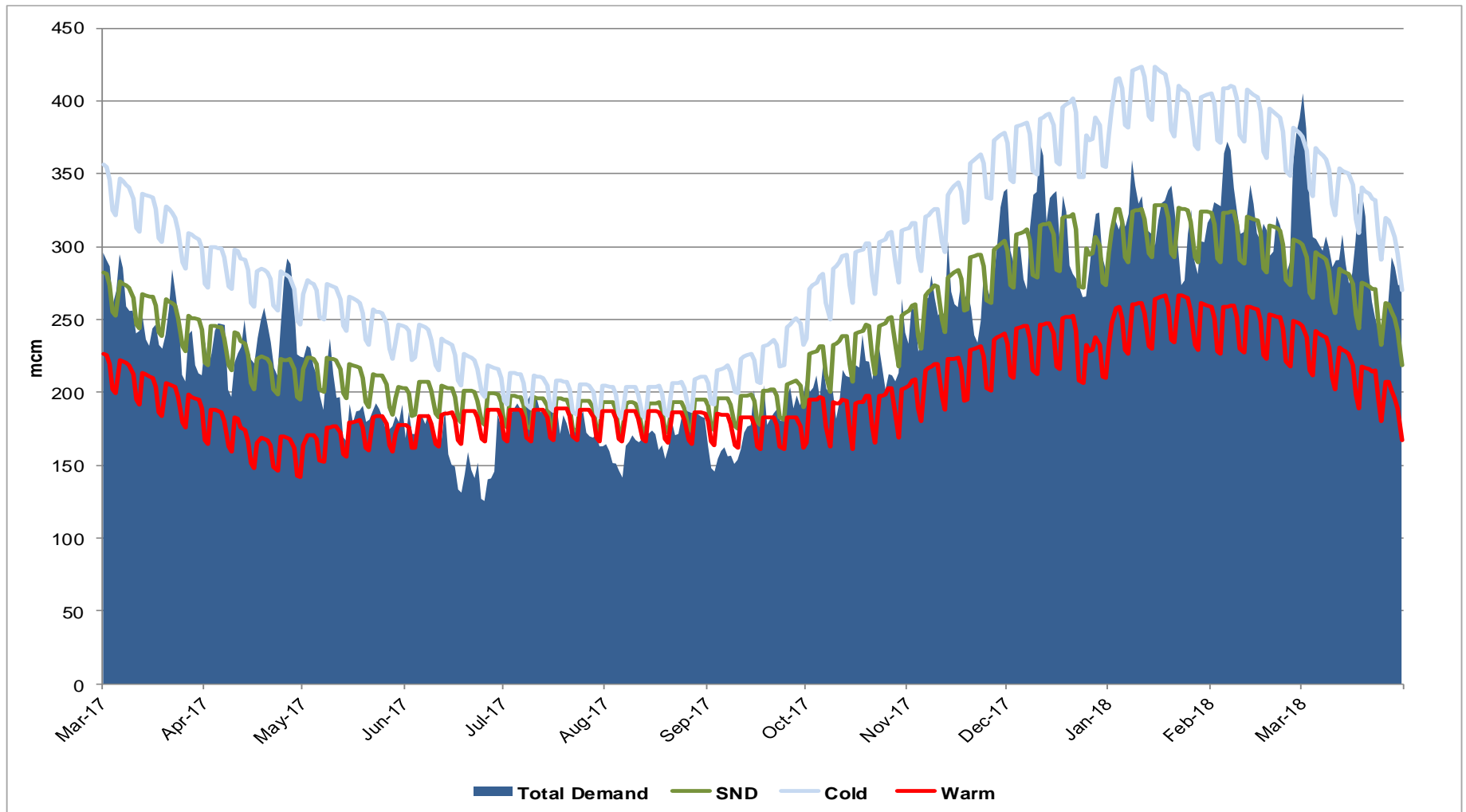
Demand Variance from SND

1st March 2017 to 31st March 2018



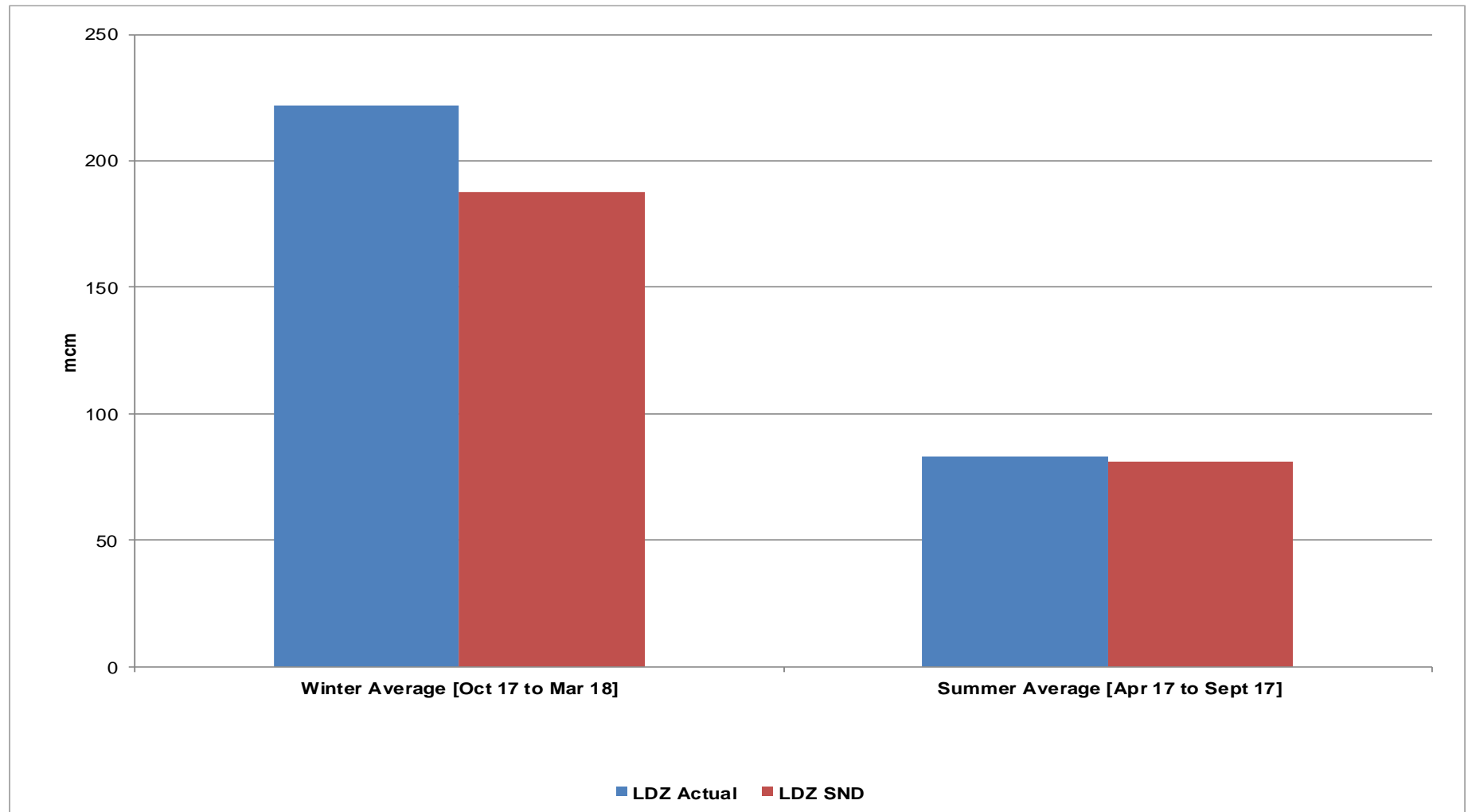
Gas Demand Vs SND / Cold / Warm

1st March 2017 to 31st March 2018



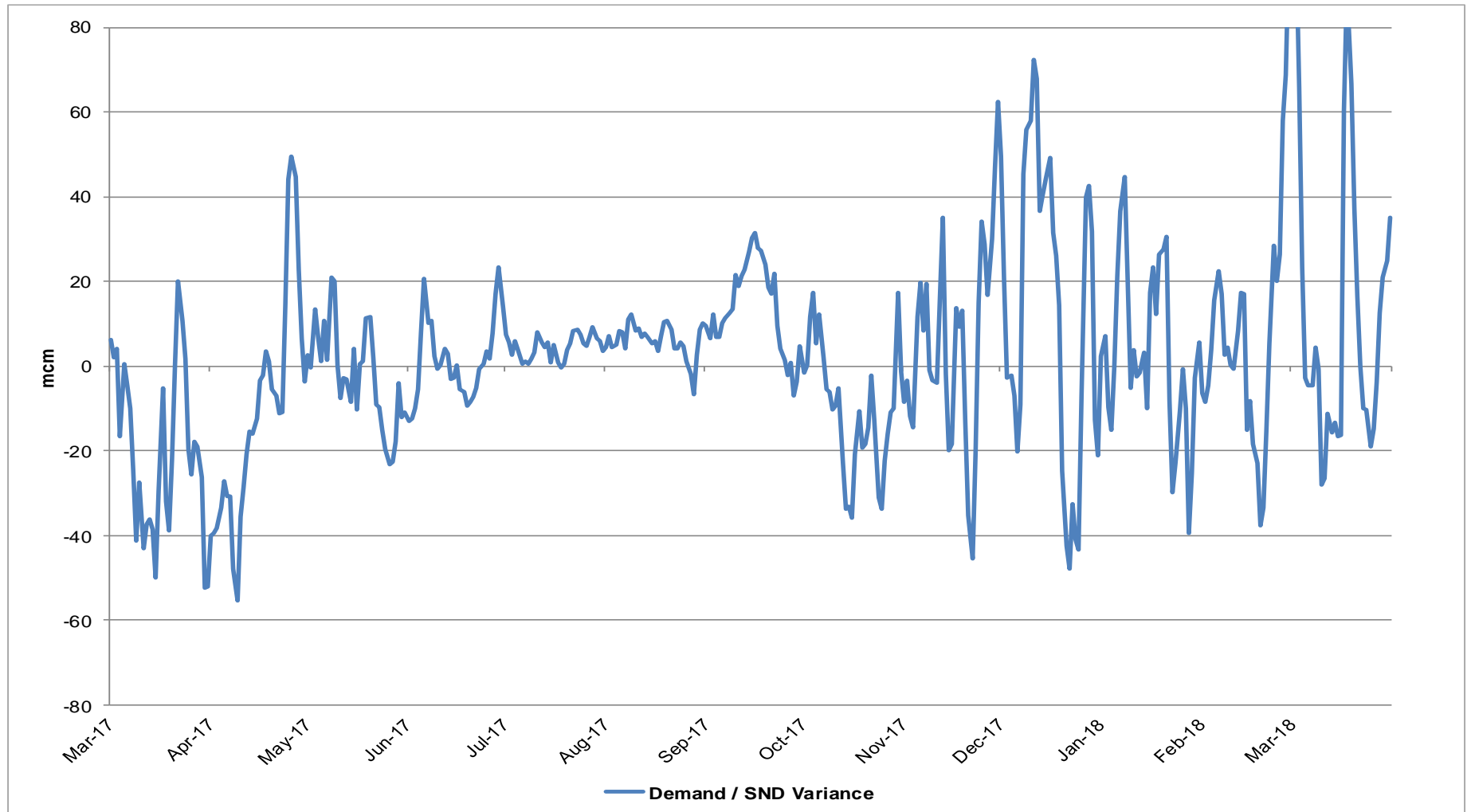
LDZ Actual Demand Vs LDZ SND

1st October 2017 to 31st March 2018



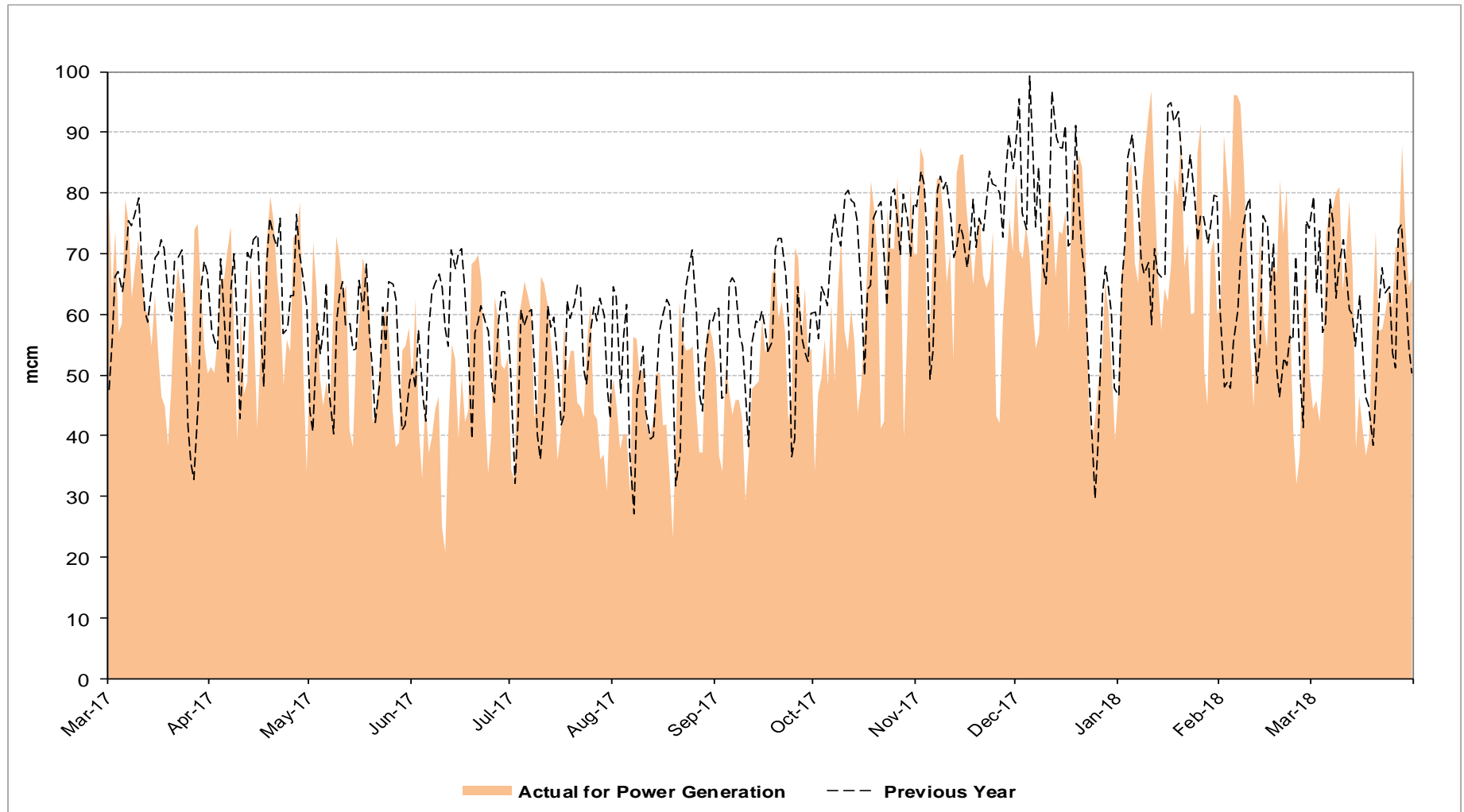
LDZ Demand / LDZ SND Variance

1st March 2017 to 31st March 2018



Gas Consumption for Power Generation

1st March 2017 to 31st March 2018

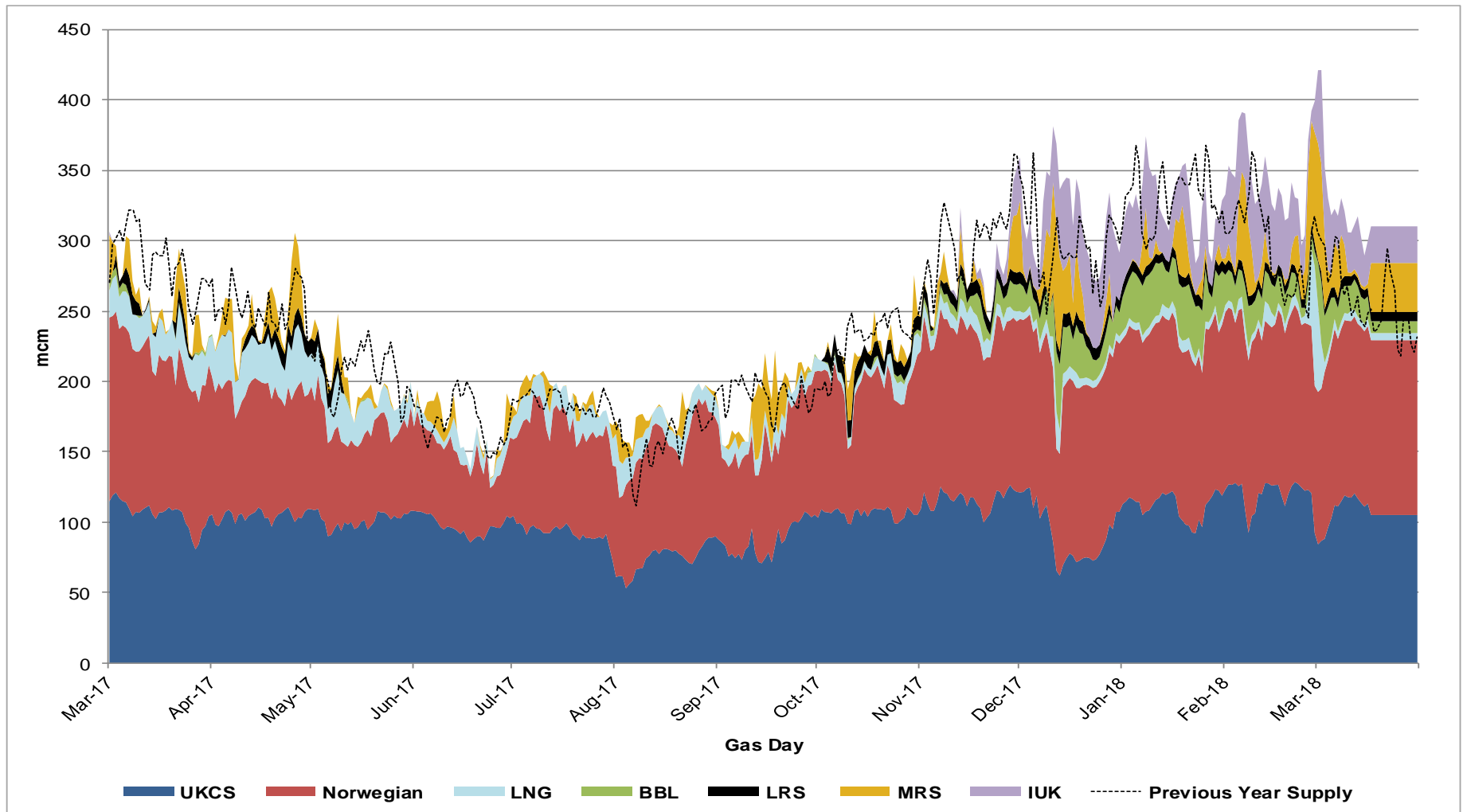


Supplies



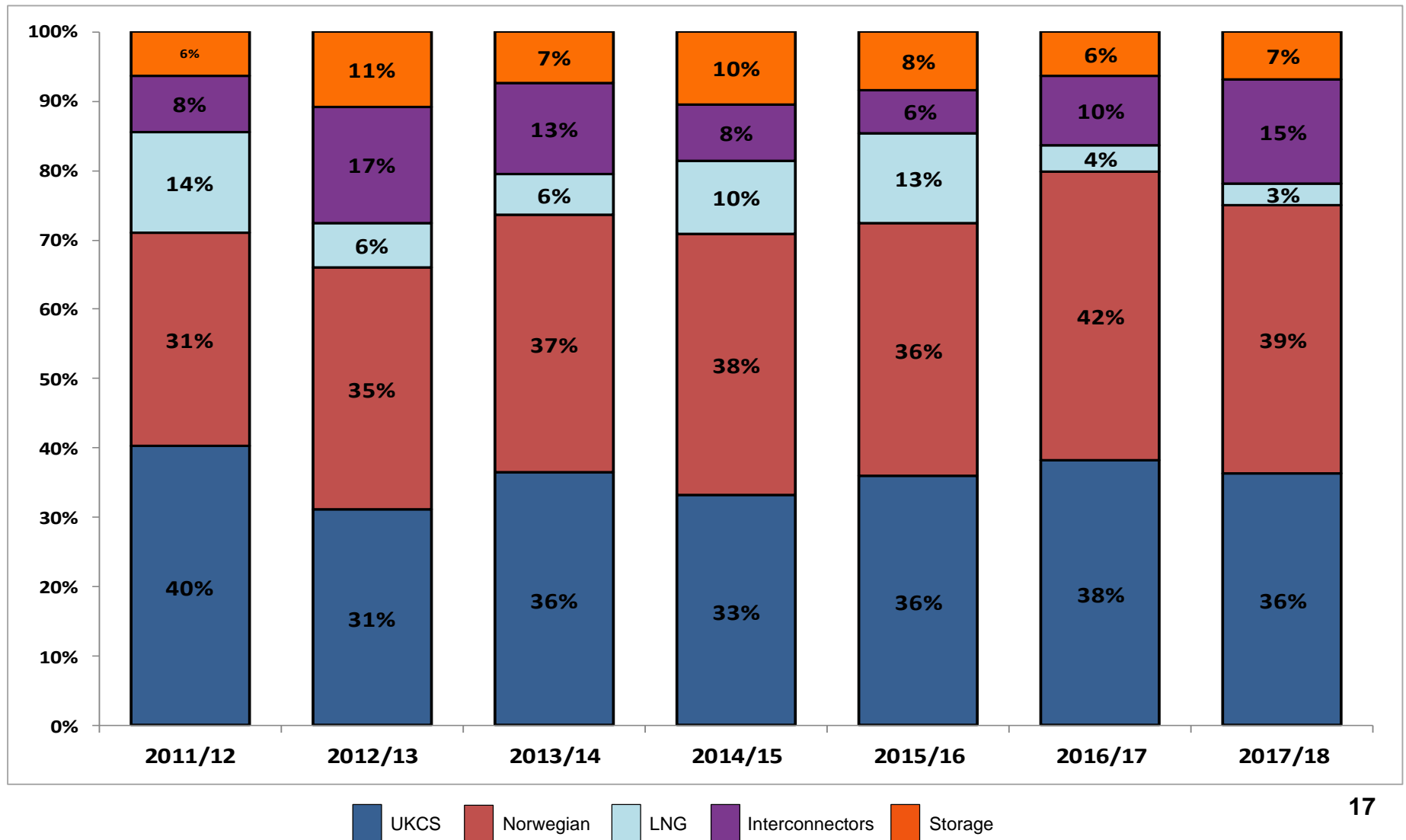
Gas Supply Breakdown

1st March 2017 to 31st March 2018 vs Previous Year



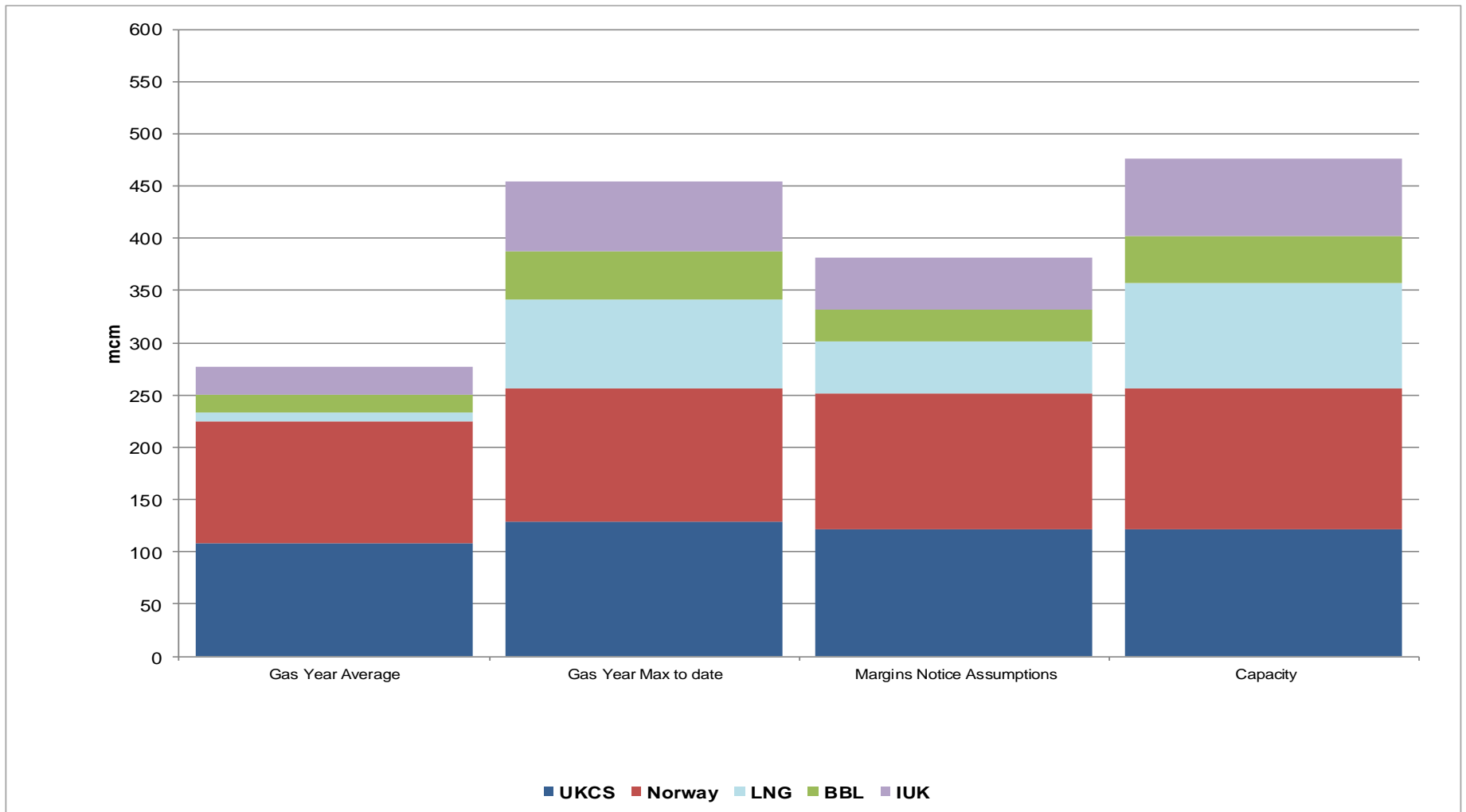
Gas Supply Breakdown

1st October 2017 to 31st March 2018 vs Same Period in Previous Years



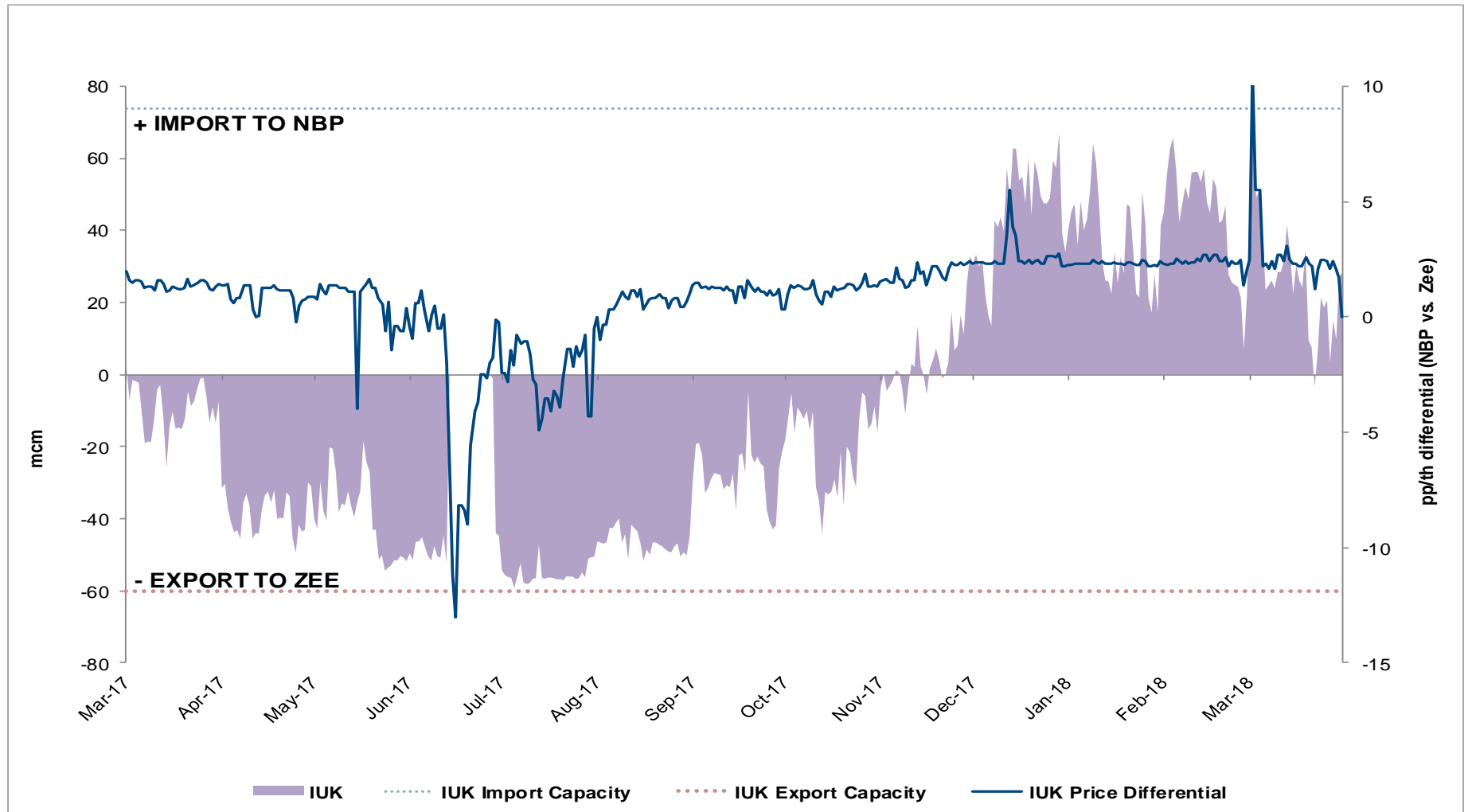
NSS (Non Storage Supply)

1st October 2017 to 31st March 2018



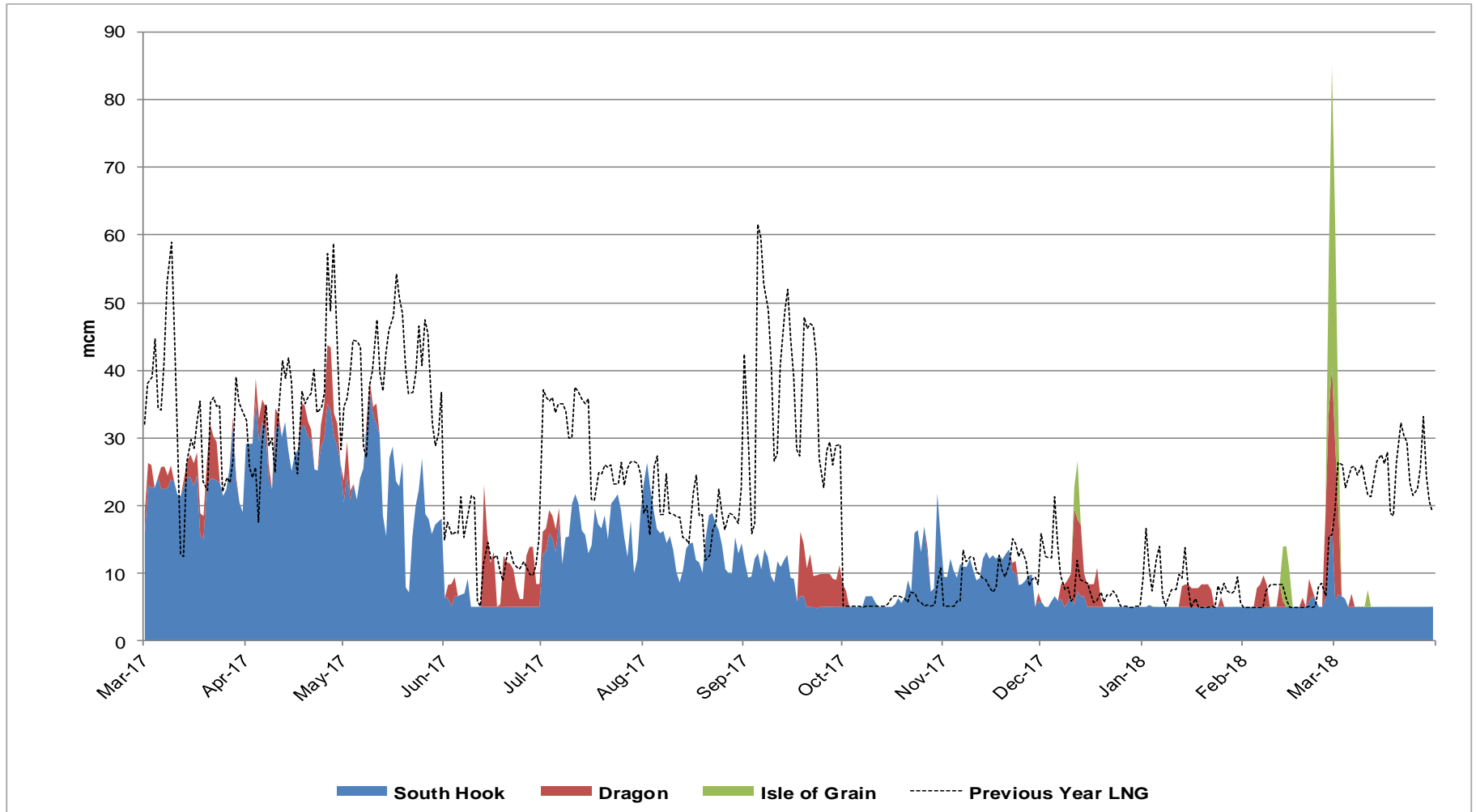
IUK Flows vs NBP & ZEE Price Differential

1st March 2017 to 31st March 2018



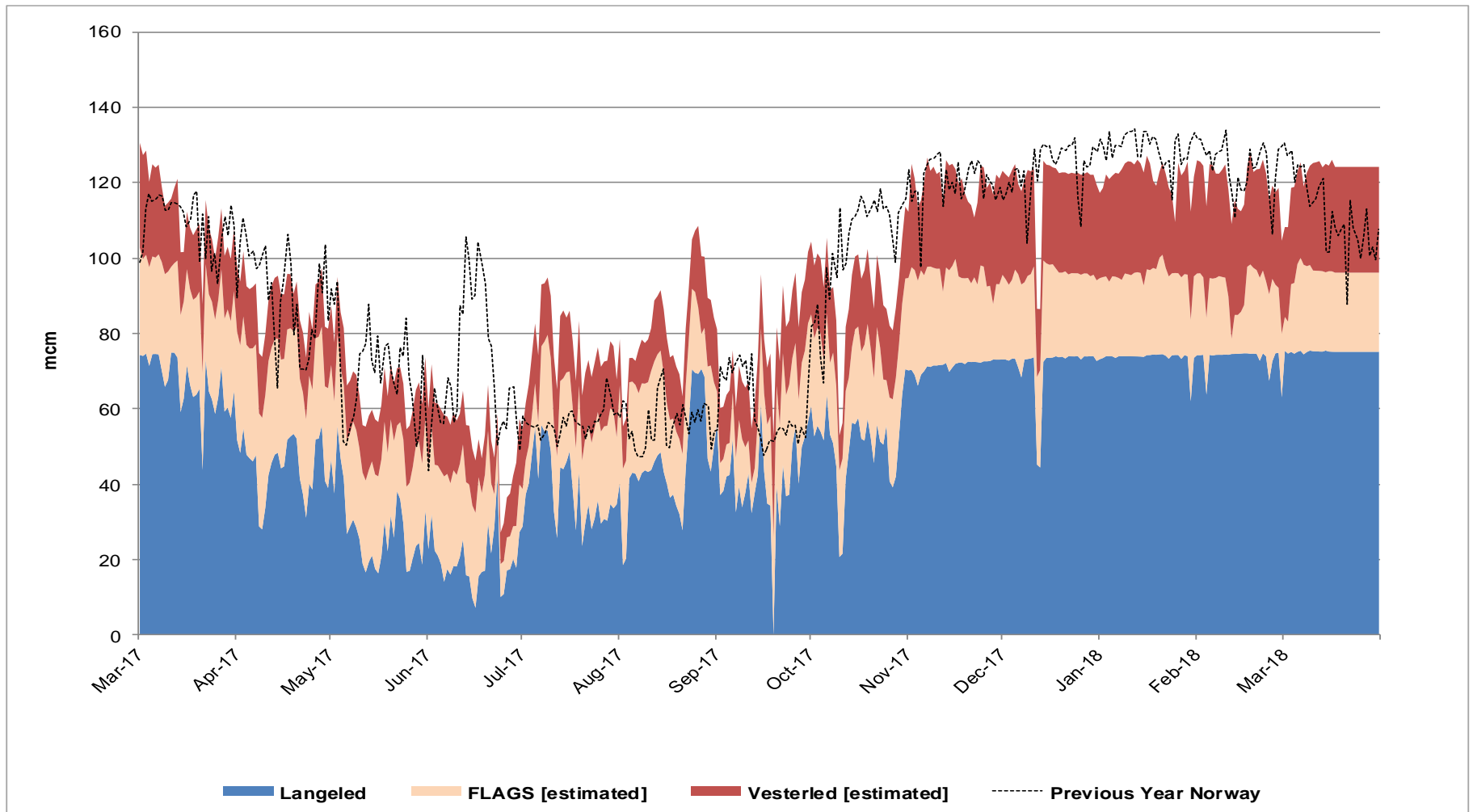
LNG Terminal Flows

1st March 2017 to 31st March 2018



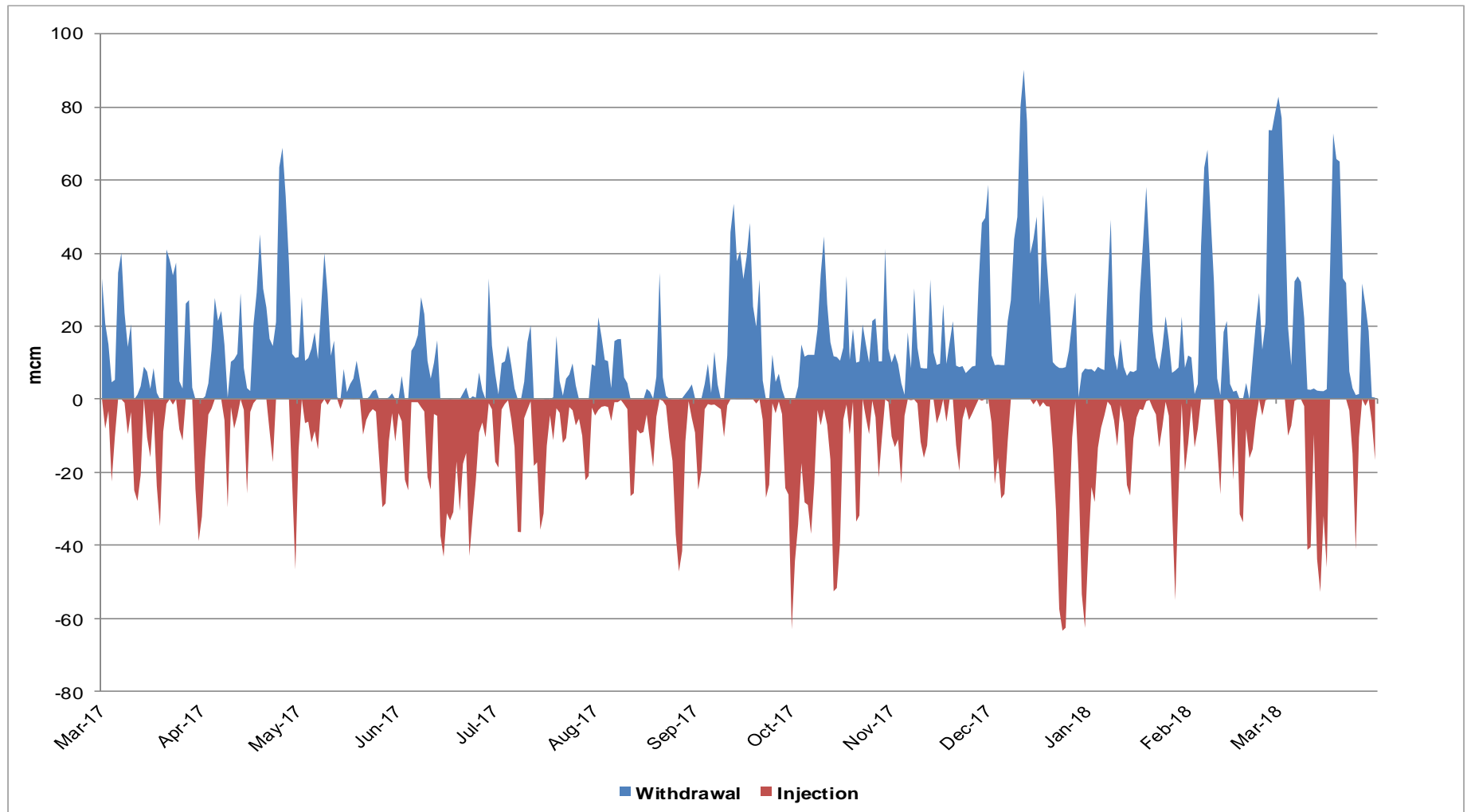
Norwegian Flows

1st March 2017 to 31st March 2018



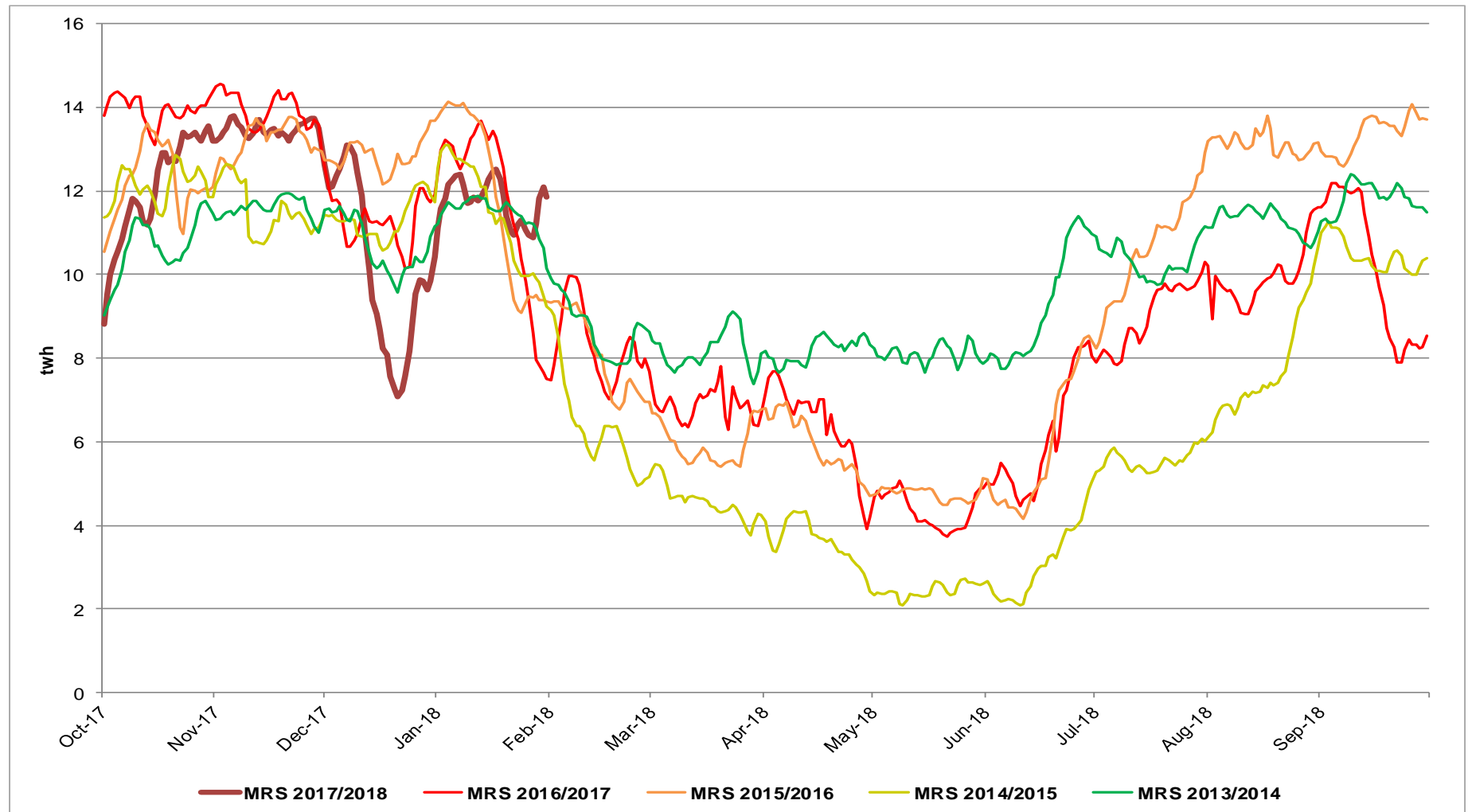
Storage Withdrawal vs Injection

1st March 2017 to 31st March 2018



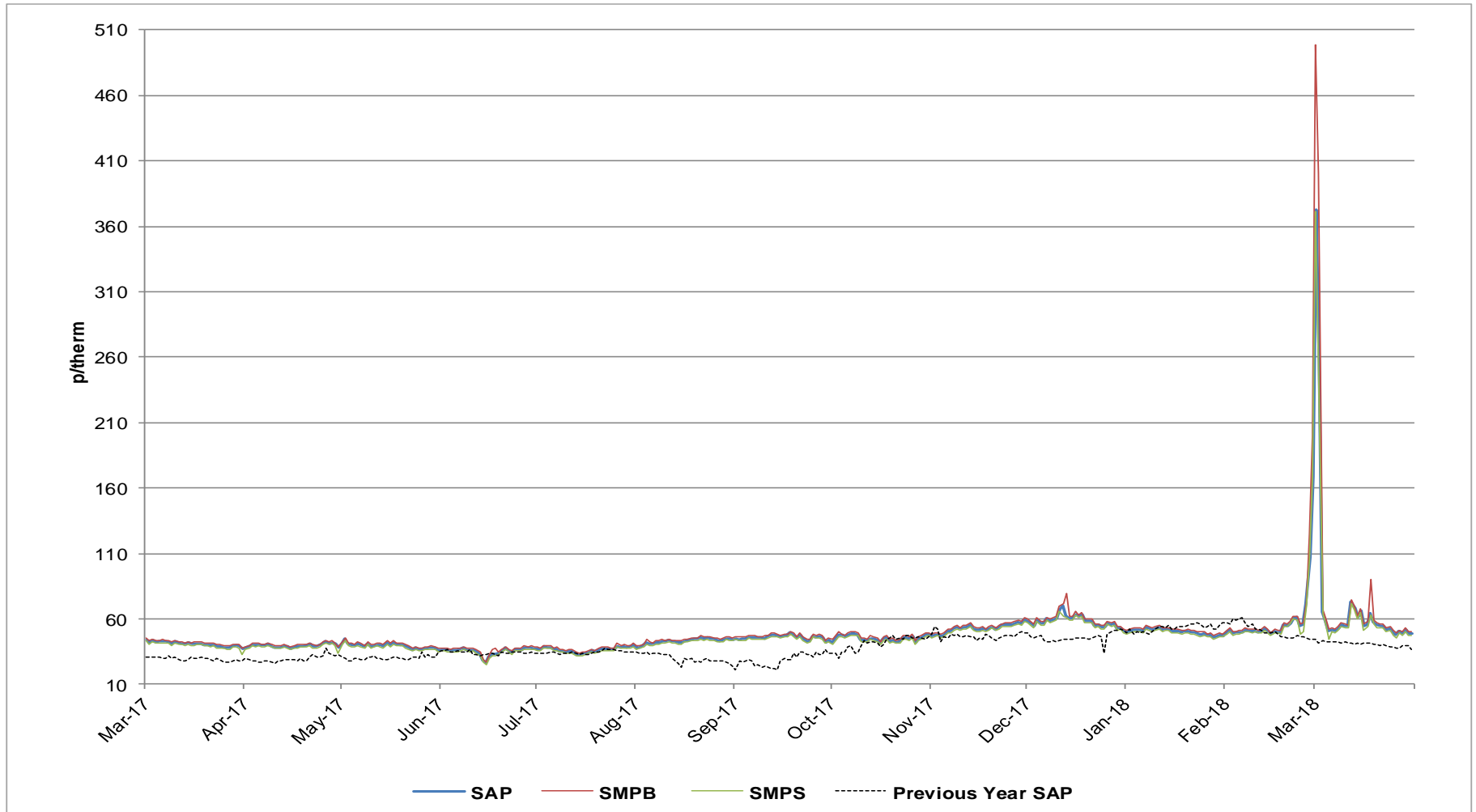
Medium Range Storage Stocks (MRS)

1st October 2017 to 31st March 2018 vs Previous Years



UK Gas Prices

1st March 2017 to 31st March 2018 vs Previous Year



What Operational Issues Affected Users?



Transporter Actions and Neutrality

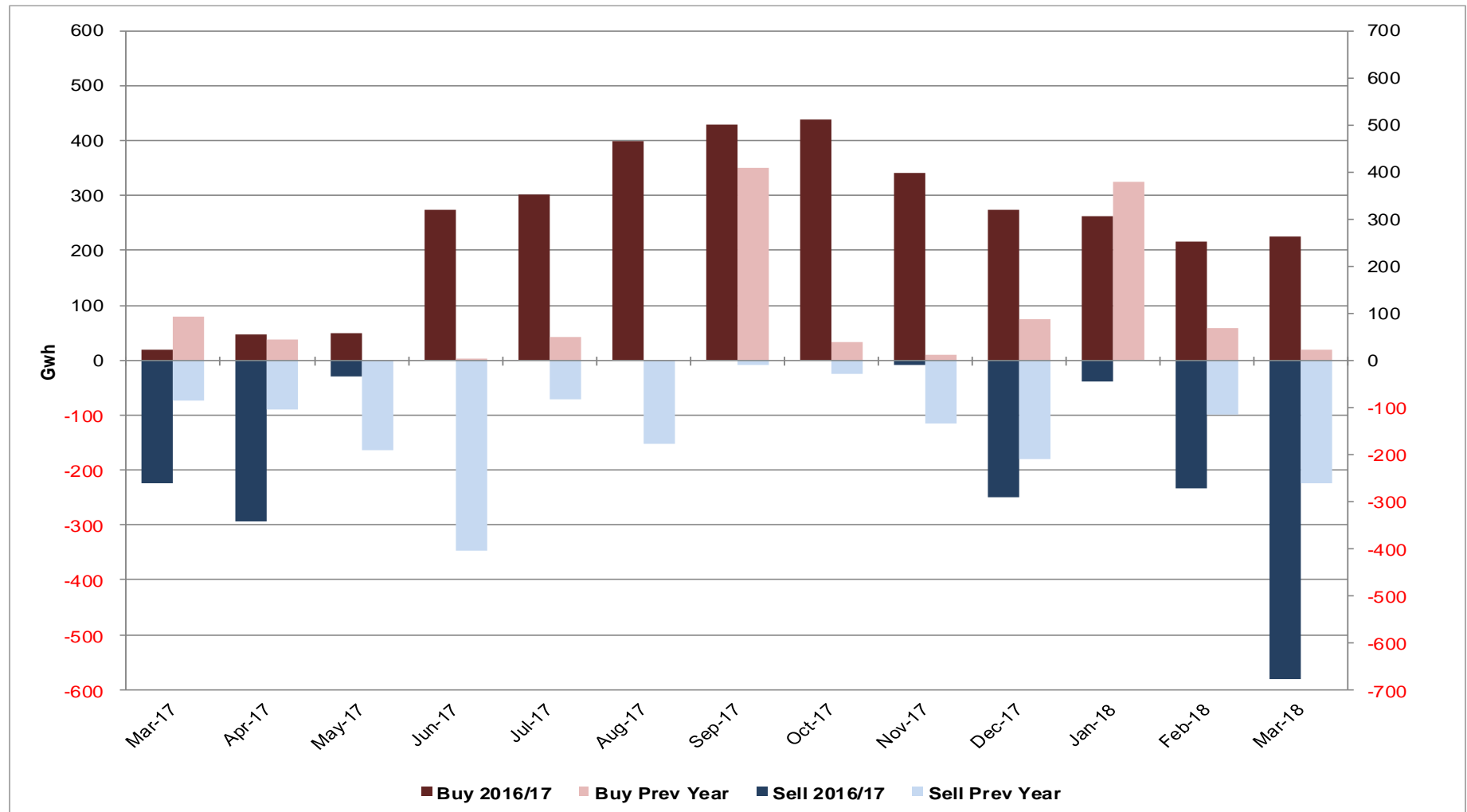


- Energy Balancing
- Capacity

Transporter Energy Traded on the OCM

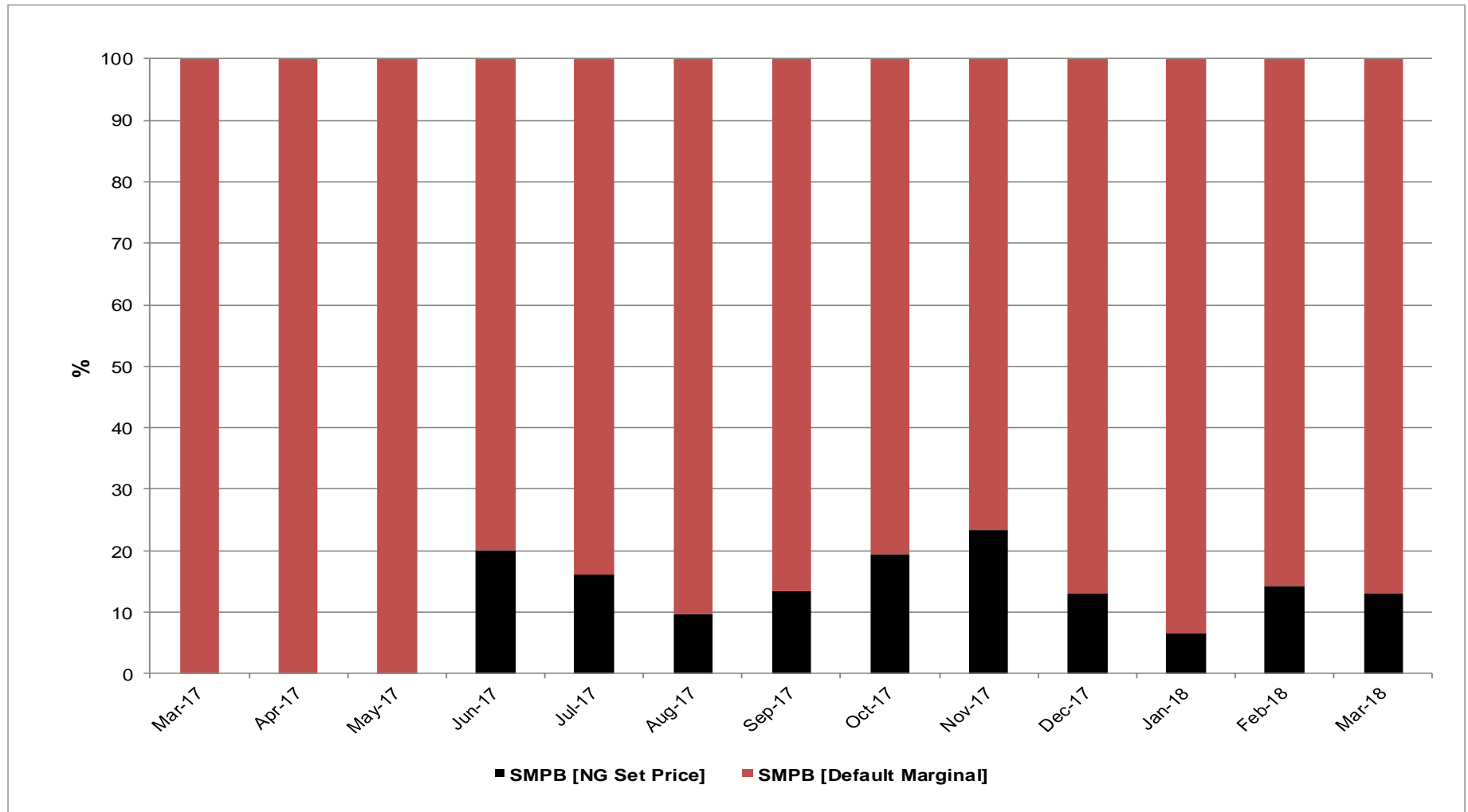
NGG Monthly Buys and Sells

1st March 2017 to 31st March 2018 vs Previous Year



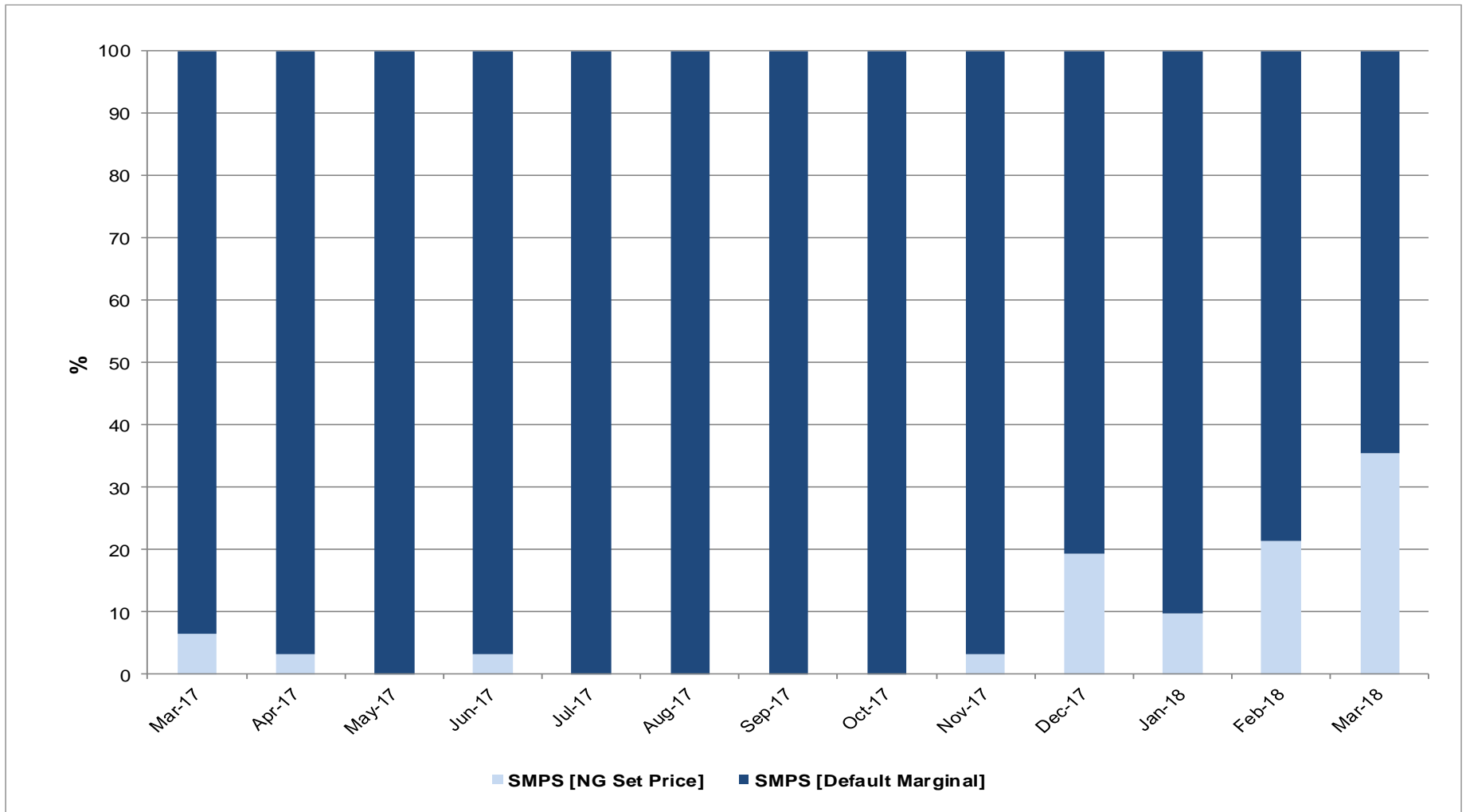
Days of Default SMP Prices (SMPB)

March 2017 to March 2018



Days of Default SMP Prices (SMPS)

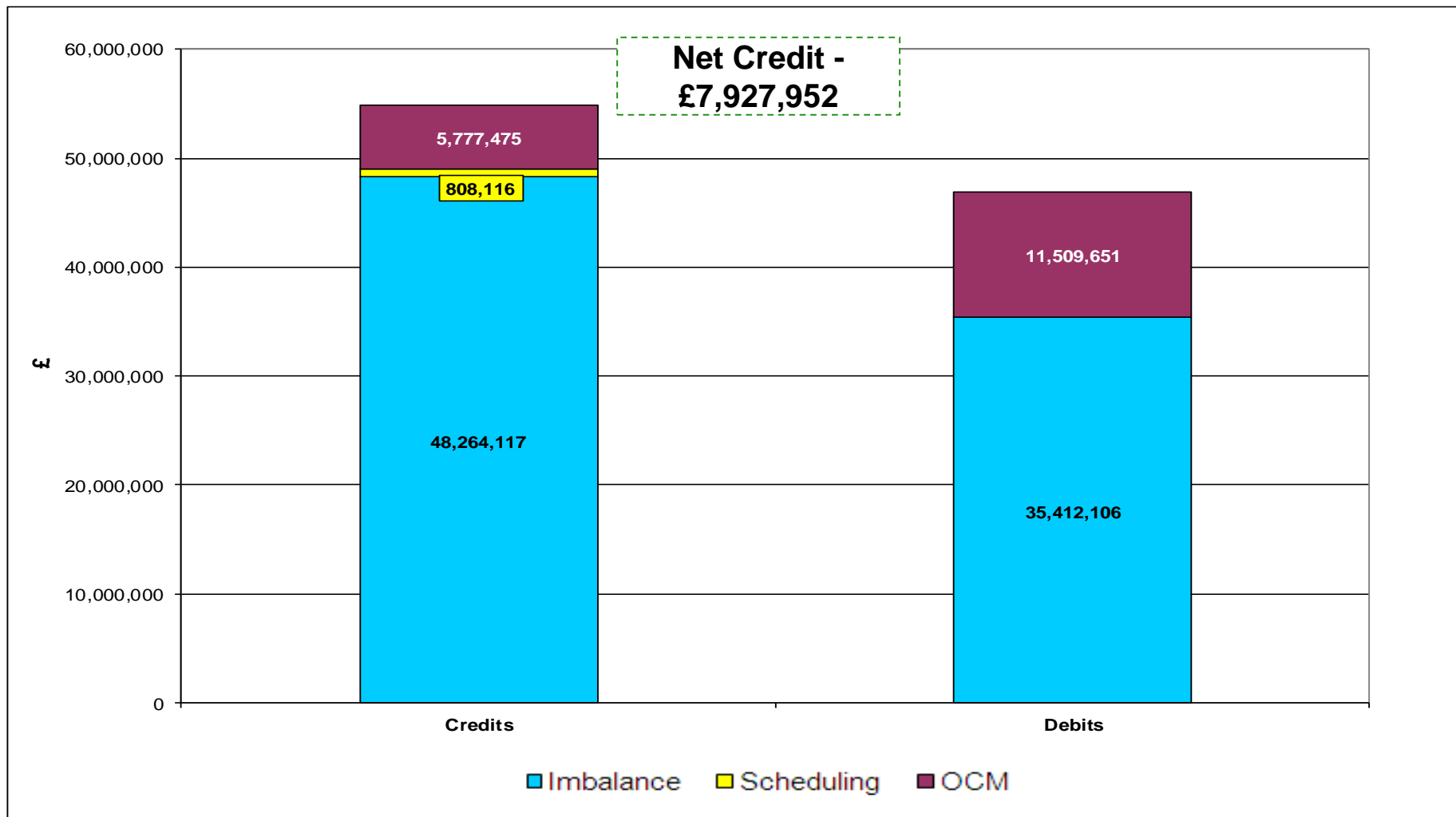
March 2017 to March 2018



Energy Balancing - Balancing Costs

Payments / Charges / Net Credit / Debit (Imbalance / Scheduling / OCM)

January/February 2018



Energy Balancing - Balancing Costs

Payments / Charges / Net Credit / Debit (Imbalance / Scheduling / OCM)

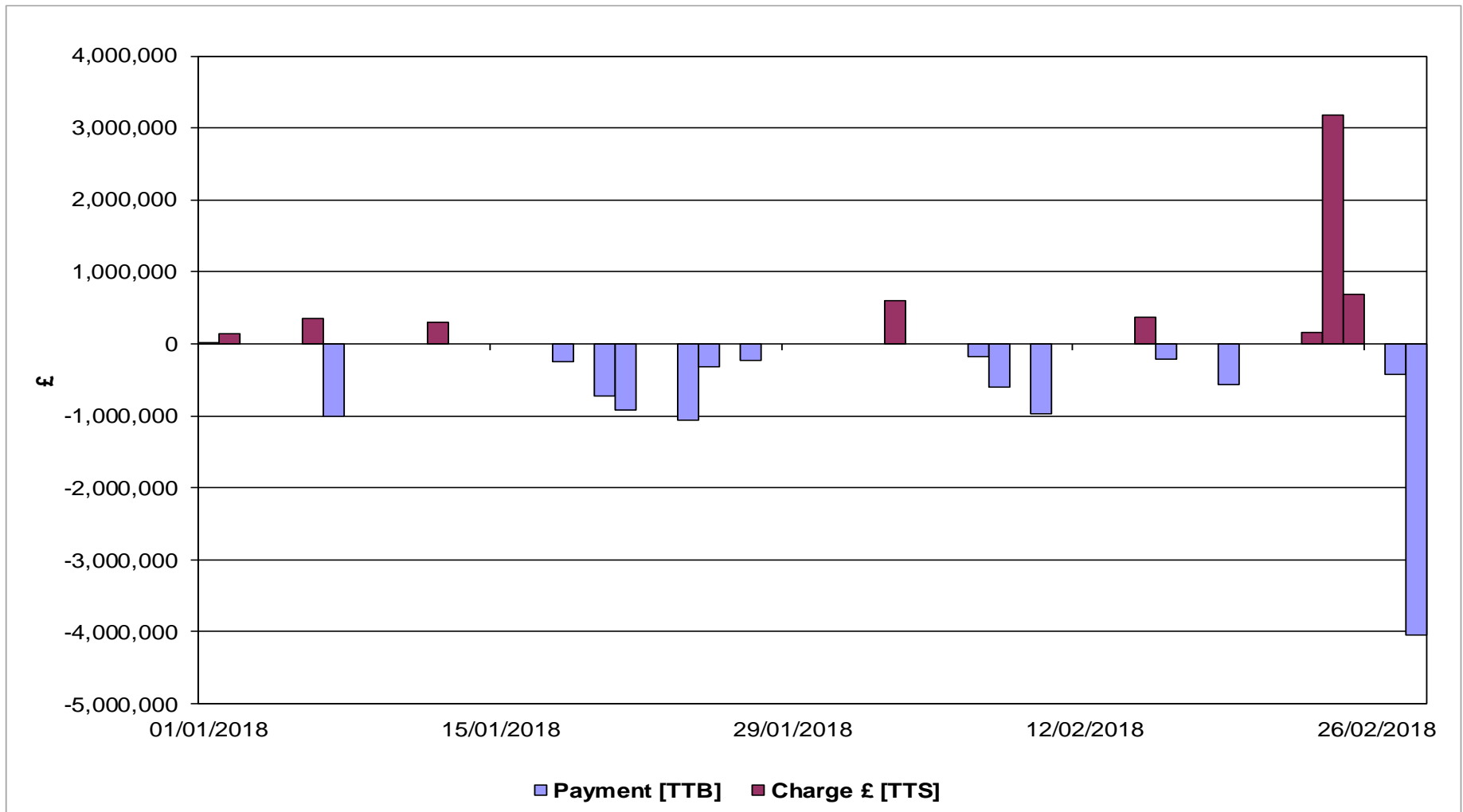
January/February 2018

		Jan-2018	Feb-2018
Imbalance	Payment £ [DCS]	-16,497,801.17	-18,914,304.43
	Charge £ [DCT]	19,372,526.26	28,891,590.90
Scheduling	Exit Charge £ [DXS]	3,072.93	3,273.25
	Exit Charge £ [EXS]	113,167.67	100,488.35
	Entry Charge £ [ESC]	258,927.88	329,185.86
OCM	Payment £ [TTB]	-4,494,812.67	-7,014,837.92
	Charge £ [TTS]	797,094.22	4,980,380.82
Balancing Costs		-447,824.88	8,375,776.83

Energy Balancing - Balancing Costs

OCM Payments / Charges

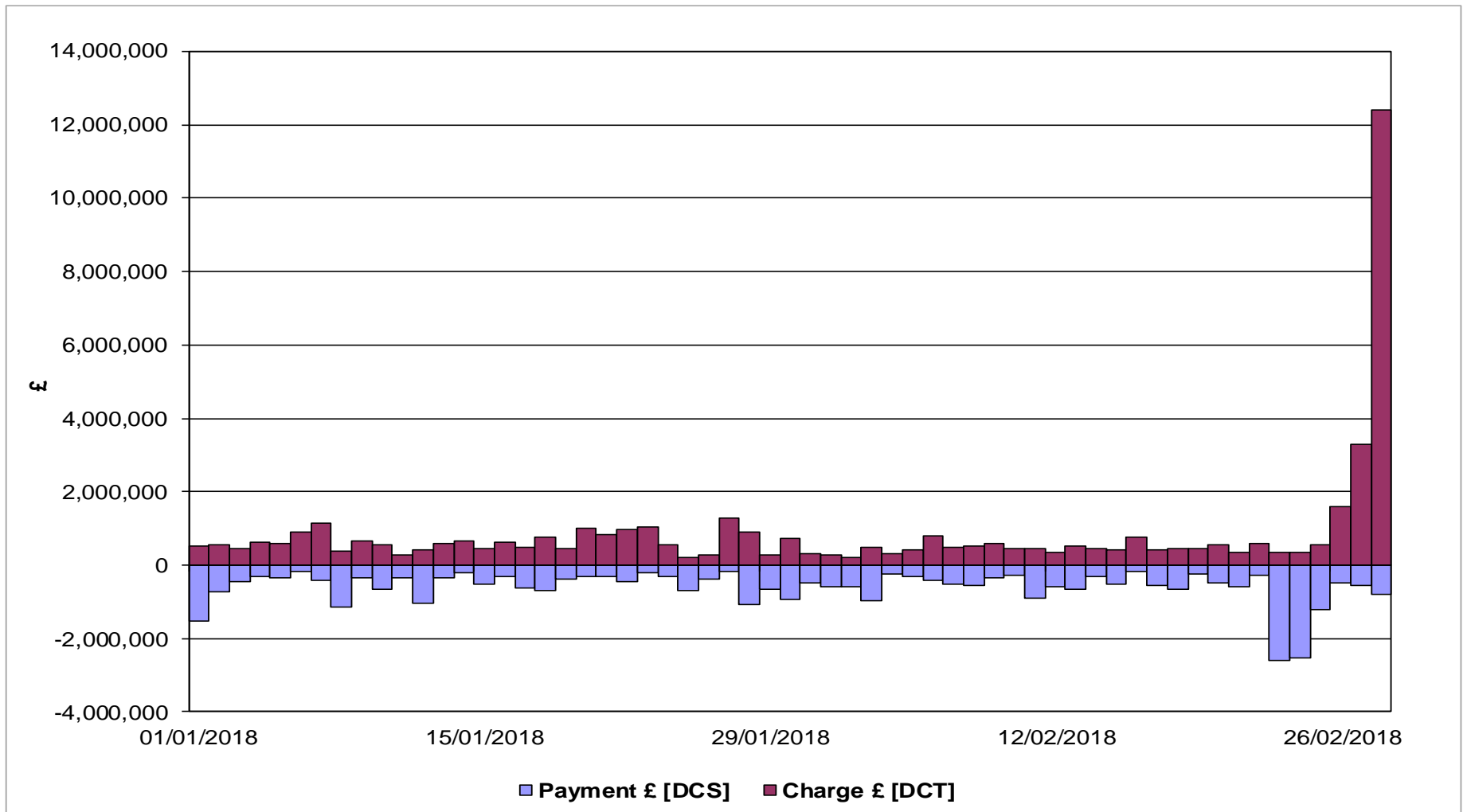
January/February 2018



Energy Balancing - Balancing Costs

Imbalance Payments / Charges

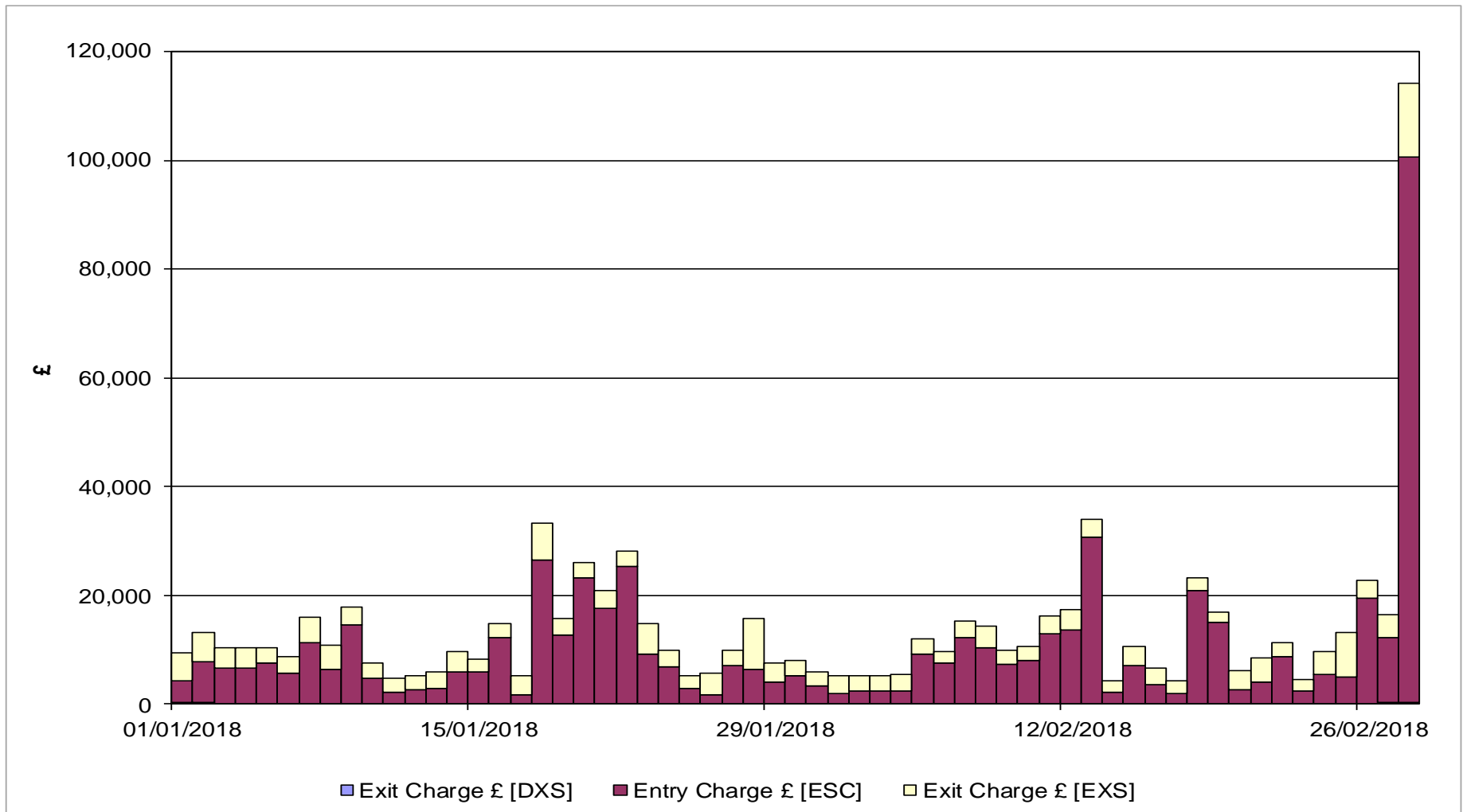
January/February 2018



Energy Balancing - Balancing Costs

Scheduling Charges

January/February 2018



Capacity Neutrality Net Cost / Revenue

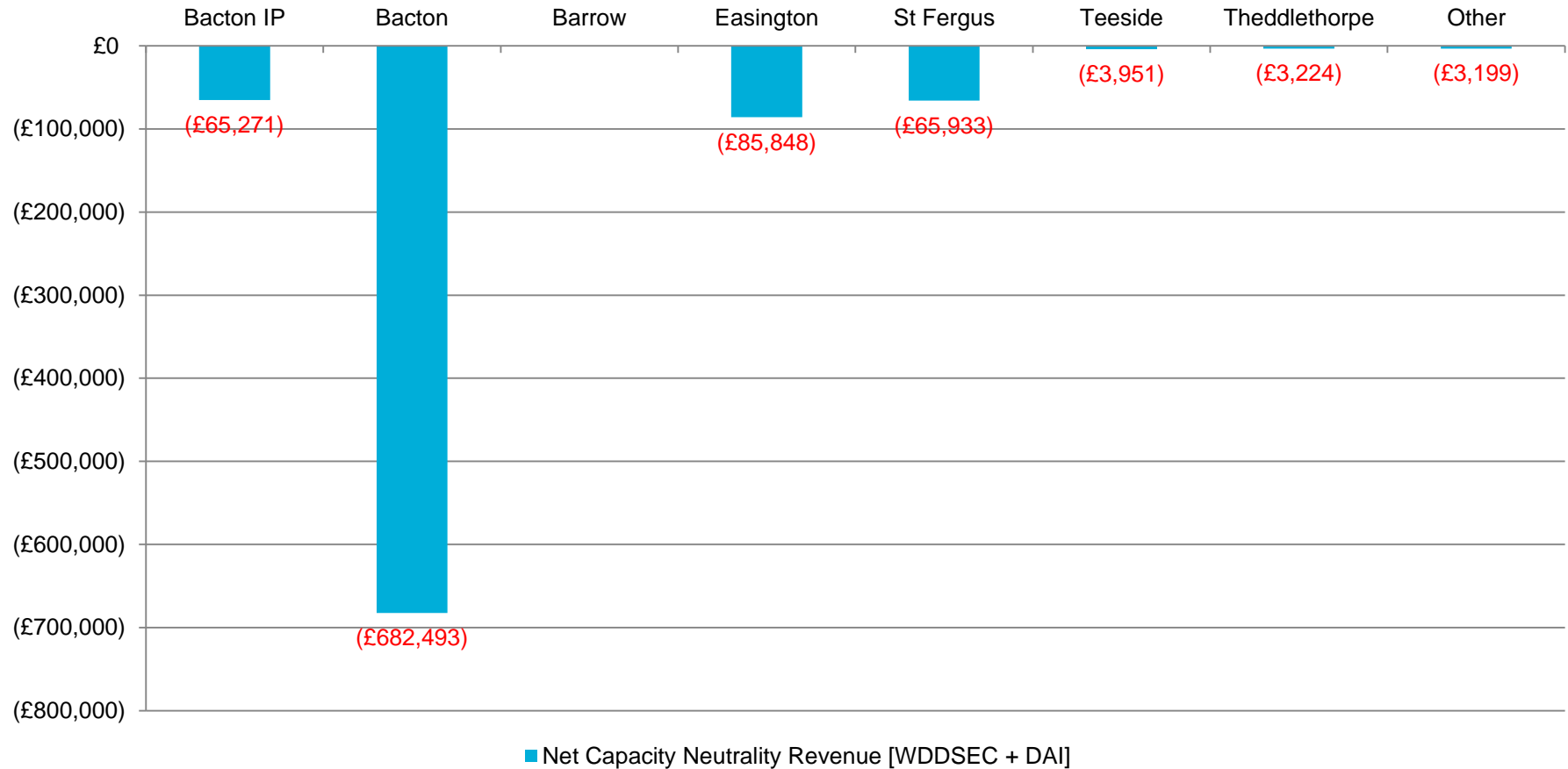
1st April 2017 to 31st March 2018

	Revenue/Costs
WDDSEC/DAI Entry Capacity Revenue	-£911,381
Total Entry Constraint Management Operational Costs	£428,979
Entry Capacity Overrun Revenue*	-£2,140,474
Non-Obligated Sales Revenue (Entry only)	-£184,756
Revenue from Locational Sells and PRI Charges	£0
Net Revenue	-£2,807,632

*Excludes December 2017

Net Capacity Neutrality Revenue

1st April 2017 to 31st March 2018



Capacity Neutrality

1st April 2017 to 31st March 2018

Month	Entry Cap Overrun Revenue	Non-obligated sales revenue (entry)	Month	Locational Sells and PRI charges revenue
Apr-17	-£560,278	-£108	Apr-17	£0
May-17	-£688,597	-£538	May-17	£0
Jun-17	-£147,532	-£308	Jun-17	£0
Jul-17	-£42,213	-£76	Jul-17	£0
Aug-17	-£30,804	-£10	Aug-17	£0
Sep-17	-£65,841	-£248	Sep-17	£0
Oct-17	-£21,076	-£9,254	Oct-17	£0
Nov-17	-£37,873	-£12,071	Nov-17	£0
Dec-17	-£155,884	-£12,302	Dec-17	£0
Jan-18	-£346,296	-£52,039	Jan-18	£0
Feb-18	-£44,080	-£48,384	Feb-18	£0
Mar-18		-£49,419	Mar-18	£0
Total	-£2,140,474	-£184,756	Total	£0 (FY17/18)